

ITEM	DESCRIPTION	PART NO.	QTY	ITEM	DESCRIPTION	PART NO.	QTY
M1	Guard	R5SM1	1	107	positioning plate	R5S107	2
M2	Rip fence assembly	R5SM2	1	108	front plate	R5S108	1
M3	Top clamp	R5SM3	1	109	screw M5x20	R5S109	4
M4	Angle gauge	R5SM4	1	110	hex nut M6	R5S110	2
M5	Handle assembly	R5SM5	1	111	set screw M6x20	R5S111	2
M6	Height adjuster	R5SM6	1	112	screw M5x20	R5S112	2
M7	Wheel Unit	R5SM7	1	113	screw M6x20	R5S113	2
M8	Stand assembly	R5SM8	1	114	flat washer 6	R5S114	1
1	rip fence	R5S1	1	115	handle	R5S115	1
23	screw M5x8	R5S23	1	116	angle indicator	R5S116	1
24	indicator	R5S24	1	117	screw M5x16	R5S117	1
29	screw ST3.5x13	R5S29	4	125	base	R5S125	1
30	table cap	R5S30	2	126	screw ST4.2x10	R5S126	6
31	push-and-pull table	R5S31	1	127	dust suction	R5S127	1
32	screw M5x8	R5S32	4	128	dust pipe cap	R5S128	1
33	back up pad	R5S33	2	129	Power cord 110v UK	R5S129	1
34	sliding rail	R5S34	1	129A	Power cord 230v UK	R5S129A	1
35	table cap	R5S35	2	130	switch base	R5S130	1
36	extension table	R5S36	1	131	earth plate	R5S131	1
37	permanent seat	R5S37	2	132	switch 110v	R5S132	1
38	guide rod	R5S38	2	132A	switch 230v	R5S132A	1
39	flat washer 5	R5S39	8	133	switch plate	R5S133	1
40	hex nut M5	R5S40	8	134	screw ST4.2x13	R5S134	6
41	screw ST4.2x13	R5S41	4	135	cable jacket	R5S135	1
42	screw M5x12	R5S42	1	136	cable clamp	R5S136	1
43	tongue	R5S43	1	137	push stick holder	R5S137	1
44	self-locking nut M5	R5S44	1	138	push stick holder	R5S138	1
45	table cap	R5S45	1	139	screw M4x12	R5S139	4
46	screw M5x14	R5S46	1	140	screw M6x30	R5S140	1
47	flat washer 5	R5S47	1	141	blade cap	R5S141	1
48	latch	R5S48	1	142	knob	R5S142	1
49	hex CS screw M6x20	R5S49	4	143	push stick	R5S143	1
50	sunk screw M5x12	R5S50	2	144	wrench	R5S144	1
51	rail holder	R5S51	2	145	bottom plate	R5S145	1
52	sliding bush	R5S52	2	146	screw ST4.2x13	R5S146	8
53	rail	R5S53	1	147	dwang	R5S147	1
54	knob	R5S54	2	148	sliding bush	R5S148	4
55	screw M5x20	R5S55	4	149	nut	R5S149	1
57	self-locking nut M8	R5S57	2	150	flange	R5S150	1
58	cylindrical pin 4x16	R5S58	2	151	blade	R5S151	1
59	tension rod	R5S59	1	152	blade holder	R5S152	1
60	screw M5x8	R5S60	23	153	spacer bush	R5S153	1
61	handle grip	R5S61	2	154	hex nut M8	R5S154	1
62	tension rod	R5S62	1	155	riving knife clamp	R5S155	1
63	stopper	R5S63	1	156	riving knife	R5S156	1
64	handle support	R5S64	1	157	riving knife holder	R5S157	1
65	screw M8x30	R5S65	1	159	slider	R5S159	1
66	tension handle	R5S66	1	160	bolt M8x40	R5S160	1
67	stopper	R5S67	1	161	screw M5x12	R5S161	4
68	fixed block	R5S68	4	162	screw M5x8	R5S162	2
69	screw ST4.2x13	R5S69	8	163	dust cover	R5S163	1
70	rail cap	R5S70	1	164	dust hole	R5S164	1
71	rail cap	R5S71	1	175	spring washer 5	R5S175	4
72	rail cap	R5S72	1	176	screw M5x12	R5S176	4
73	rail	R5S73	1	177	screw M6x12	R5S177	4
95	clamp	R5S95	2	178	flat washer 6	R5S178	1
96	plate	R5S96	2	179	bracket	R5S179	1
97	connecting plate	R5S97	1	180	support plate	R5S180	1
98	extension table	R5S98	1	181	nut	R5S181	1
99	connecting plate	R5S99	1	189	motor support	R5S189	1
100	rail cap	R5S100	1	190	support	R5S190	4
101	rubber foot	R5S101	2	191	foot	R5S191	3
102	flat washer 6	R5S102	12	192	adj foot + M8 nut	R5S192	3
103	hexagon bolt M6x12	R5S103	8	200	Power Unit 110v	R5S200	1
104	hex nut M6	R5S104	8	200A	Power Unit 230v	R5S200A	1
105	dust pipe	R5S105	1				
106	hex nut M5	R5S106	2				

EVOLUTION POWER TOOLS Ltd

Venture one, Longacre Close, Holbrook Industrial Estate, Sheffield, S20 3FR, UK

Tel: +44 (0) 870 609 2297 Fax: +44 (0) 114 247 3339 www.evolutionpowertools.com

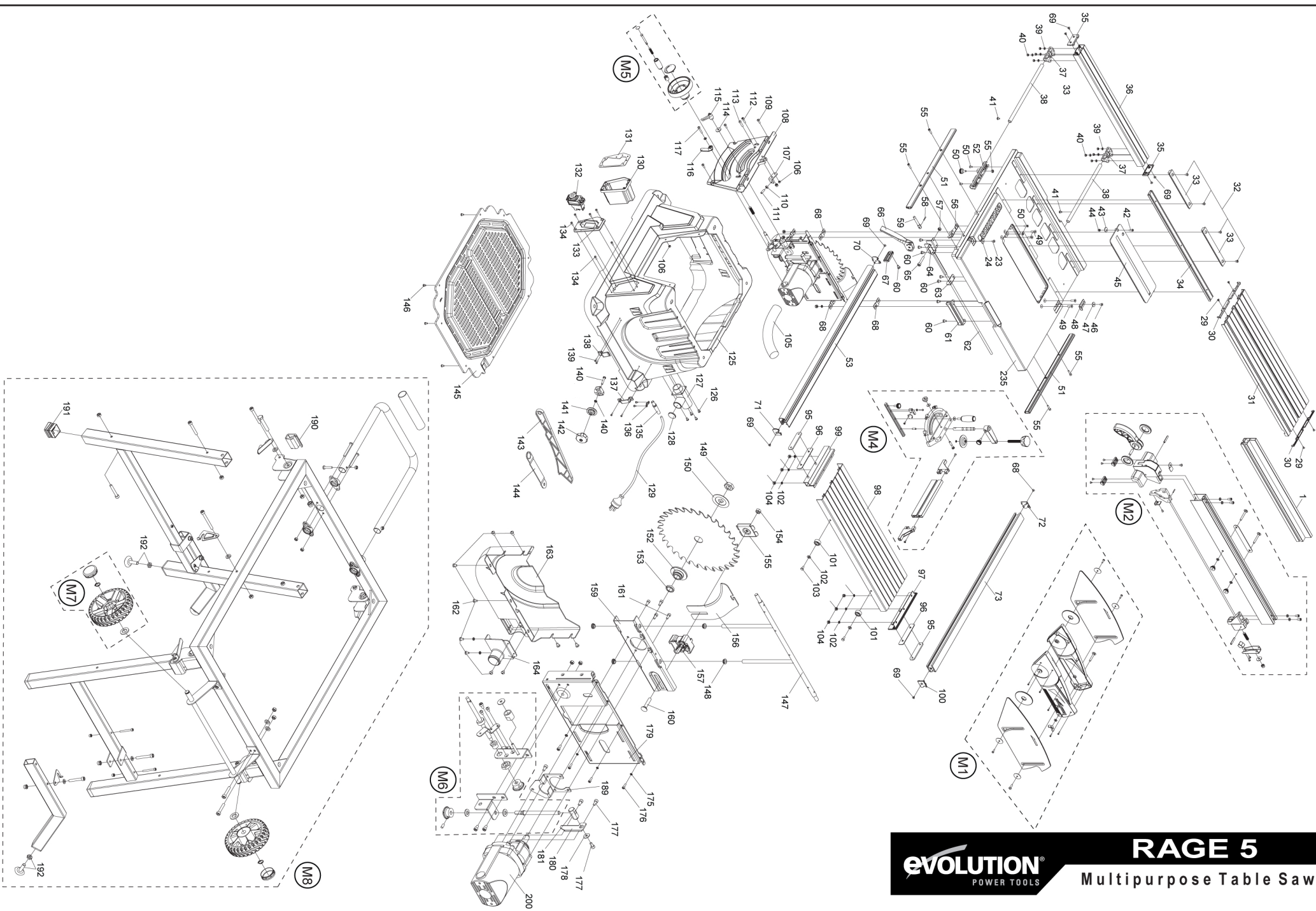
evolution
POWER TOOLS

RAGE 5

Multipurpose Table Saw

Service Parts List

REV.
1.01



evolution
POWER TOOLS

RAGE 5
Multipurpose Table Saw

Service Parts List

REV.
1.01