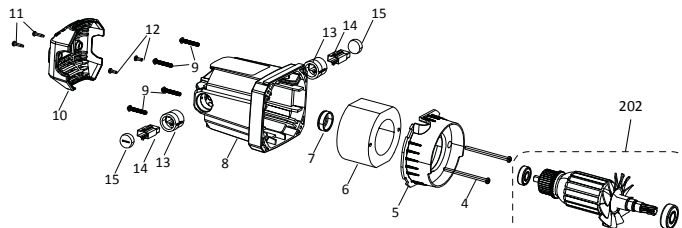
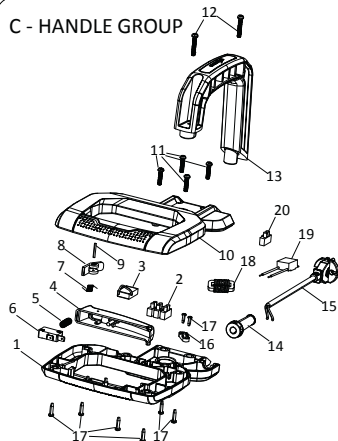


# S355 MCS

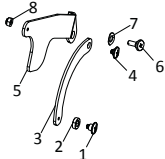
D - MOTOR GROUP



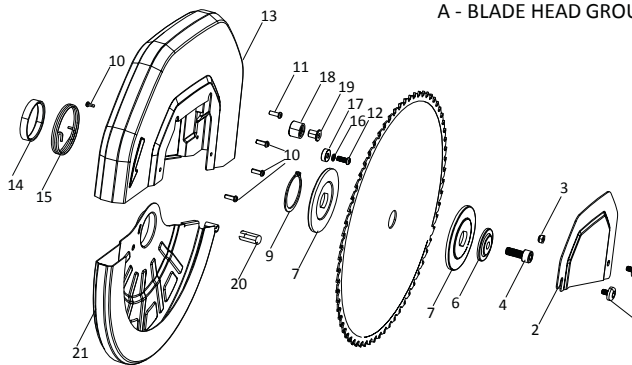
C - HANDLE GROUP



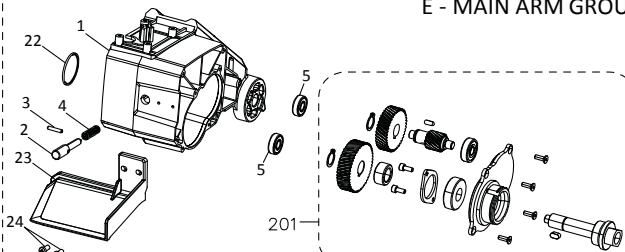
B - LINKAGE GROUP



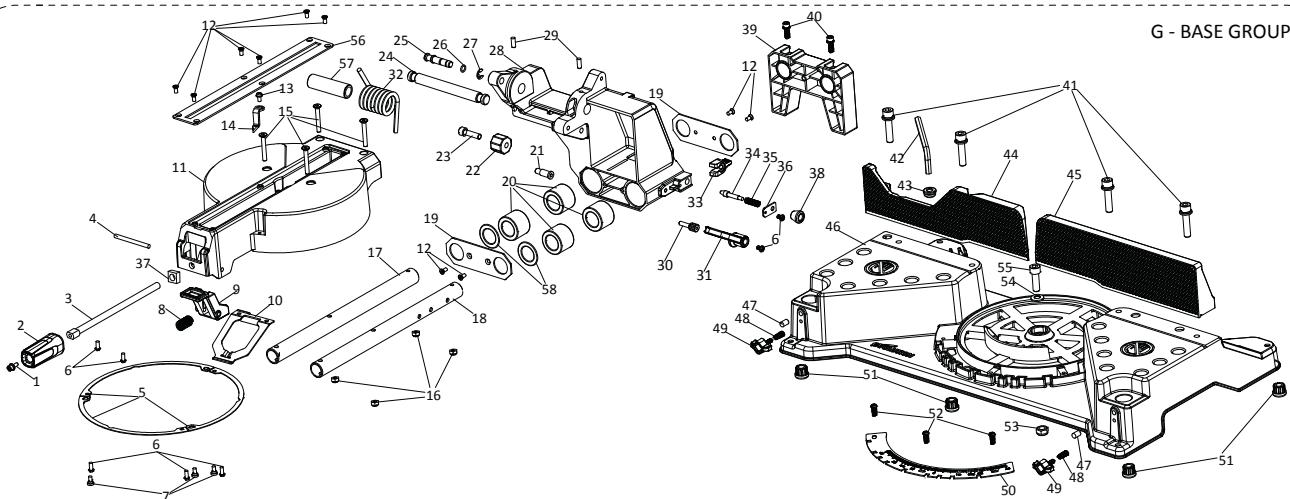
A - BLADE HEAD GROUP



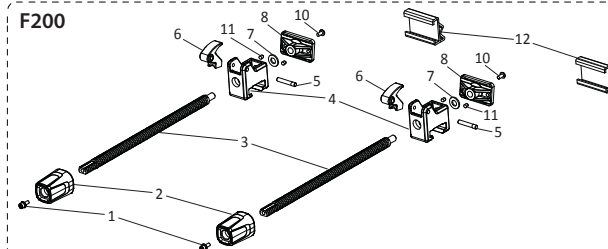
E - MAIN ARM GROUP



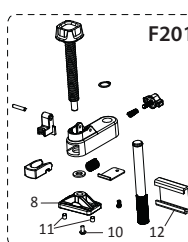
G - BASE GROUP



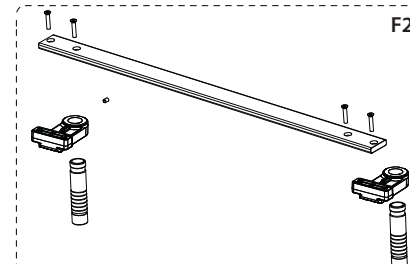
F200



F - CLAMP GROUP



F202



Service Parts List

V: 102-0003

355mm Mitre Chop Saw (Steel)

230V  
EU

**EVOLUTION**  
evolutionpowertools.com

No.	Description	Part Code	Qty
A1	Arbour Cover Screw	083-0101	2
A2	Arbour Cover	083-0102	1
A3	Locking Nut M6	F-NSH-M6-ST-BO	1
A4	Socket Cap Screw M10x25	F-SHCS-M10-25-ST-BO	1
A6	Blade Washer	083-0103	1
A7	Flange 89	083-0104	2
A9	Circlip φ48	F-CCEXT-48-120-ST-BO	1
A10	Pozi Pan Head Screw M5x14	F-SPHPZ-M5-14-ST-BO	4
A11	Spring Washer φ5	F-SWA-M5-ST-BO	3
A12	Pozi Pan Head Screw M6x12	F-SPHPZ-M6-12-ST-BO	1
A13	Blade Head Assembly 355	083-0105	1
A14	Moving Guard Spring Spacer 355	083-0106	1
A15	Moving Guard Spring	083-0107	1
A16	Socket Cap Screw M5x12	F-SHCS-M5-12-ST-BO	1
A17	Ball Bearing 606	F-B-606-2Z	1
A18	Bump Stop	083-0108	1
A19	Bump Stop Fixing	083-0109	1
A20	Slider Cap	083-0110	1
A21	Moving Guard Assembly 355	083-0111	1
B1	Linkage Shoulder Screw Upper	083-0115	1
B2	Screw Spacer	083-0116	1
B3	Small Linkage	083-0117	1
B4	Linkage Shoulder Screw Middle	083-0118	1
B5	Main Linkage	083-0119	1
B6	Linkage Shoulder Screw Lower	083-0120	1
B7	Wave Washer M10	F-WW-M10-ST-BO	1
B8	Nut M6	F-NNIF-M6-ST-BO	1
C1	Main Handle Lower	083-0121	1
C2	Terminal Block	083-0122	1
C3	Capacitor 220-240V	083-0123	1
C4	Main Trigger Blue	084-0106	1
C5	Main Trigger Spring	083-0126	1
C6	Switch	083-0127	1
C7	Trigger Lock Spring	083-0128	1
C8	Lock Trigger	083-0129	1
C9	Trigger Lock Pin	083-0130	1
C10	Main Handle Upper	083-0131	1
C11	Pozi Pan Head Screw M5x30 w/ Washer	F-SPHPZ-M5-30-ST-BO	4
C12	Pozi Pan Head Screw M5x30 w/ Washer	F-SPHPZ-M5-30-ST-BO	2
C13	Carry Handle	083-0132	1
C14	Cable Sleeve Small	083-0133	1
C15	Cable EU 220-240V/3m	084-0113	1
C16	Cable Strain Clamp	083-0140	1
C17	Pozi Pan Head Tapping Screw ST4x16	F-TFPX-4-16-ST-BO	8
C18	Inductor	083-0195	1
C19	Soft start	102-0180	1
C20	Terminal Block	102-0181	1
D4	Pozi Pan Head Tapping Screw ST5x80	F-TFPX-5-80-ST-BO	2
D5	Air Baffle 65	084-0125	1
D6	Stator 65/220V-240V 2200W	084-0127	1
D7	Ball Bearing Cap	053-0270	1
D8	Motor Housing	083-0150	1
D9	Pozi Pan Head Screw M5x30 w/ Washer	F-SPHPZ-M5-30-ST-BO	4
D10	End Cap Blue	084-0131	1
D11	Pozi Pan Head Tapping Screw ST4x16	F-TFPX-4-16-ST-BO	2
D12	Pozi Pan Head Screw M4x10	F-SPHPZ-M4-10-ST-BO	2
D13	Brush Holder	083-0152	2
D14	Carbon Brush 220V-240V	083-0153	2
D15	Brush Holder Cover	083-0155	2

No.	Description	Part Code	Qty
D202	Armature 65 Assembly 230V EU/UK/AUS	084-0051	1
E1	Arm	083-0160	1
E2	Arbour Locking Pin	083-0161	1
E3	Roller Pin 4x20	F-SDL-4-20-ST-BO	1
E4	Locking Pin Spring	083-0162	1
E5	Ball Bearing 6000 YQ	F-B-6000-2Z	2
E22	Rubber Bearing Ring	083-0196	1
E23	Chip Guard	084-0170	1
E24	Cross head Screw M5x10	F-SPHPZ-M5-10-ST-BO	2
E201	Gearbox Assembly (S355)	084-0055	1
F1	Hex bolt M5*16 with washer	F-SFCS-M5-16-ST-BO	2
F2	Banner lock knob	102-0101	2
F3	Banner rod	102-0102	2
F4	Sliding Base	102-0103	2
F5	Clamp pin	102-0104	2
F6	Banner move nut	102-0105	2
F7	Washer 20*10*2	F-W-M10-ST-BO	3
F8	workpiece clamp	102-0106	3
F10	Cross head screw M5*12 with washer	F-SPHPZ-M5-12-ST-BO	3
F11	Spring Bearing Insert	102-0107	6
F12	V clamp extrusions	102-0108	3
F200	Front Clamp Assembly	102-0200	1
F201	Top Clamp Assembly	102-0201	1
F202	Clamp Bar Assembly	102-0202	1
G1	Hex bolt M5*16 with washer	F-SFCS-M5-16-ST-BO	1
G2	Table Locking Knob (Blue)	102-0123	1
G3	Push Rod	102-0124	1
G4	Locking pin	102-0125	1
G5	friction washer	102-0126	3
G6	Cross head screw M5*12	F-SPHPZ-M5-12-ST-BO	5
G7	Rail lock Screw	102-0127	3
G8	Lever Spring	102-0128	1
G9	Table positioning handle (Blue)	102-0129	1
G10	Table positioning Plate	102-0130	1
G11	Table	102-0131	1
G12	Cross head screw M5*8	F-SCHS-M5-8-ST-BO	10
G13	Cross head screw M5*10 with washer	F-SPHPZ-M5-10-ST-BO	1
G14	Mitre Indicator (Blue)	102-0132	1
G15	Hex bolt M6*45	F-SCHS-M6-45-ST-BO	4
G16	Nut M6	F-NNIF-M6-ST-BO	4
G17	Left rail	102-0133	1
G18	Right rail	102-0134	1
G19	Bevel Bracket Cover	102-0135	2
G20	Rail Bearing φ40*φ25*30	102-0136	4
G21	Lock Down Pin	102-0137	1
G22	Deep position cap	102-0138	1
G23	Hex bolt screw M8*30	F-SHCS-M8-30-ST-BO	1
G24	Pivot Shaft	102-0139	1
G25	Pin	102-0140	1
G26	O ring 10*1.9	102-0141	1
G27	E clip 8mm	F-ECLIP-8-100-ST-BO	1
G28	Neck- Bevel Bracket	102-0142	1
G29	Set Screw M6*18	F-SSCFP-M6-8-ST-BO	2
G30	Rail lock pin	102-0143	1
G31	Rail lock handle	102-0144	1
G32	Head spring	102-0145	1

No.	Description	Part Code	Qty
G33	Pin Stop- For Packaging	102-0146	1
G34	Rail positioning pin	102-0147	1
G35	Rail Pin Spring	102-0148	1
G36	Rail positioning plate	102-0149	1
G37	Square Nut M10	F-NS-M10-ST-BO	1
G38	Rail pin Cap	102-0150	1
G39	Rail Support Bracket	102-0151	1
G40	Hex bolt screw M6*20 with washer	F-SFCS-M6-20-ST-BO	2
G41	Hex bolt screw M10*50 with washer	F-SFCS-M10-50-ST-BO	4
G42	Hexkey M6 & M10	F-HEXKEY-M6/10-ST-BO	1
G43	Grommet	102-0152	1
G44	Left fence	102-0169	1
G45	Right fence	102-0170	1
G46	Base	102-0155	1
G47	Bearing screw M8*12	102-0156	2
G48	Wing spring	102-0157	2
G49	Wing screw	102-0158	2
G50	Mitre Plate	102-0159	1
G51	Rubber foot	102-0160	4
G52	Cross head screw M6*12	F-SPHPZ-M6-12-ST-BO	3
G53	Lock nut M10	F-NNIF-M10-ST-BO	1
G54	Washer 10mm	F-W-M10-ST-BO	1
G55	Hex bolt screw M10*35	F-SHCS-M10-35-ST-BO	1
G56	Kerf plate	102-0162	1
G58	Felt Washer	102-0163	2

**Service Parts List**

**V: 102-0003**

**355mm Mitre Chop Saw (Steel)**

**230V  
EU**