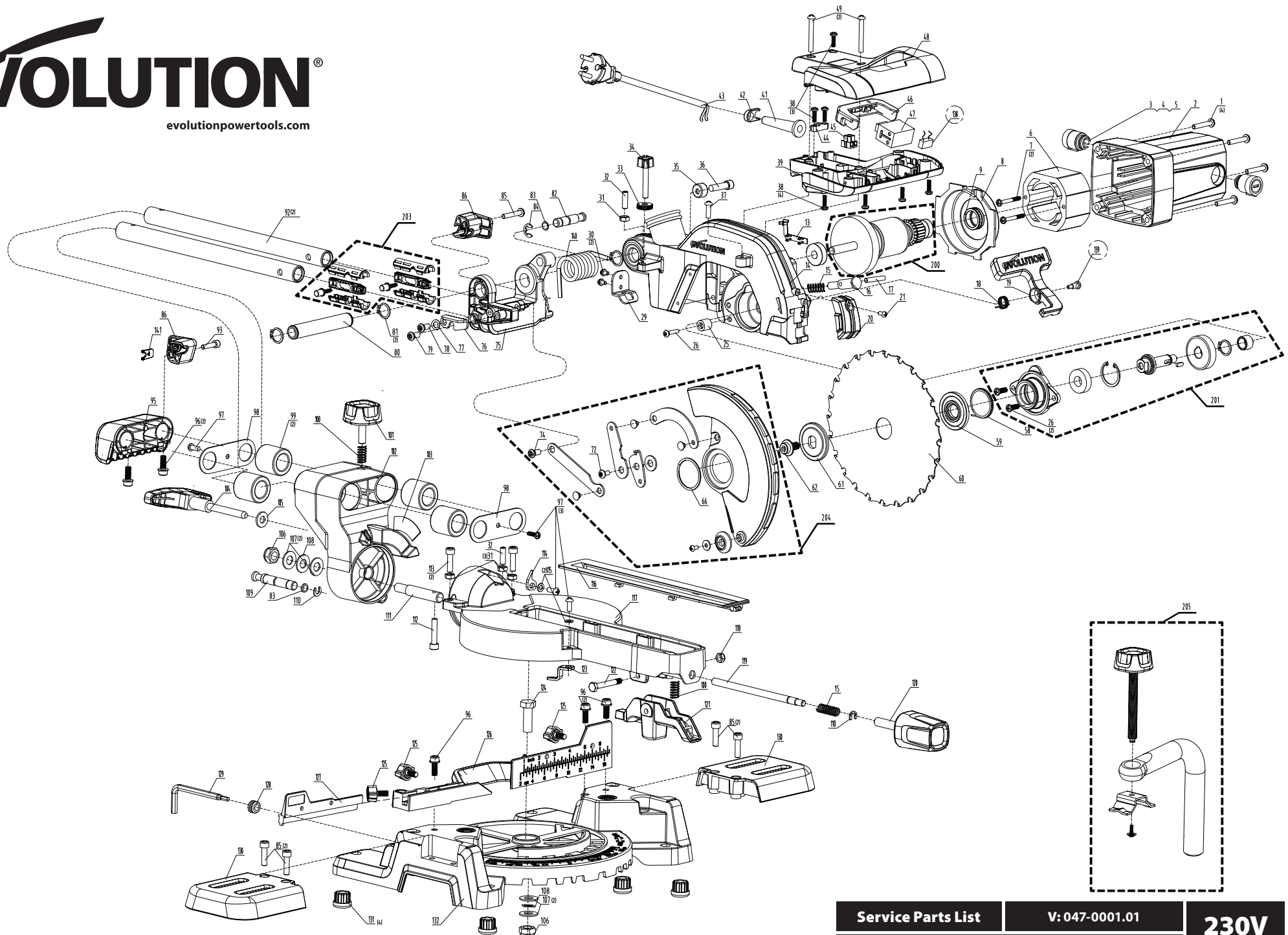


# evolution®

evolutionpowertools.com



**R185**  
**SMS**

Service Parts List

V: 047-0001.01

185mm Multi-Material Cutting Sliding Mitre Saw

**230V**  
**UK**

No.	Description	Part Code	Qty	No.	Description	Part Code	Qty	No.	Description	Part Code	Qty
1	Screw M5x25	F-SPHPZ-M5x25-ST-BO	4	97	Screw M5x12	F-SPHPZ-M5-12-ST-BO	4				
2	Motor Housing	046-0115	1	98	Bevel Bracket Cover	047-0184	2				
3	Brush Holder	046-0114	2	99	Rail Bearing	047-0185	4				
4	Brush Holder Cap	046-0112	2	100	Spring	048-0108	2				
5	Carbon Brush (220-240V)	046-0113	2	101	Sliding Lock Screw Orange	048-0165	1				
6	Stator 1000W	047-0105	1	102	Neck- Bevel Bracket	047-0189	1				
7	Tapping Screw 4x50	F-TFPX-4-50-ST-BO	2	103	Bevel Angle Label	047-0191	1				
8	Fan Shroud	046-0119	1	104	Bevel Lock Lever (Orange)	048-0169	1				
9	Bearing Cap	048-0202	1	105	Washer M8	F-W-M8-ST-BO	1				
13	Laser Cable Cover	047-0115	1	106	Nylock Nut M10	F-NNIF-M10-ST-BO	2				
14	Blade Housing	047-0116	1	107	Washer M10	F-W-M10-ST-BO	4				
15	Lock Pin Spring	046-0126	2	108	Wave Washer 12mm	F-WW-M12-ST-BO	2				
16	Lock Pin	046-0127	1	109	33.9 Pin	048-0168	1				
17	Spring Pin Ø4x28	F-SDL-400-28-ST-BO	1	110	External E-clip 6mm	F-ECLIP-6-100-ST-BO	2				
18	Guard release level Spring	046-0141	1	111	Connecting Bolt	048-0119	1				
19	Guard Release Lever (Orange)	046-0122	1	112	Cap Screw M6x30	F-SHCS-M6-30-ST-BO	1				
20	Laser blanking plate	047-0133	1	113	Cap Screw M6x20	F-SHCS-M6-20-ST-BO	3				
21	Screw M4x10	F-SPHPZ-M4-10-ST-BO	1	114	Bevel Indicator (Orange)	048-0117	1				
25	Guard Stop	046-0124	1	115	Washer M5	F-W-M5-ST-BO	2				
26	Screw M5x16	F-SPHPZ-M5-16-ST-BO	3	116	Channel Guide (Orange)	047-0192	1				
29	Finger Guard	047-0136	1	117	Table	047-0194	1				
30	Screw M4x10	F-SPHPZ-M4-10-ST-BO	2	118	Nylock Nut M6	F-NNIF-M6-ST-BO	1				
31	Hex Nut M6	F-NSF-M6-ST-BO	4	119	Push Rod	047-0195	1				
32	Grub Screw M6X20	F-SSCCP-M6-20-ST-BO	2	120	Table Locking Knob (Orange)	048-0109	1				
33	Trench Cut Adjustment Screw	048-0215	1	121	Table Positioning Handle (Orange)	047-0196	1				
34	Trench Cut Knob (Orange)	048-0216	1	122	Hex Bolt M6x43x8	F-HB-M6-43-8-ST-BO	1				
35	Head Stop	048-0213	1	123	Mitre Indicator (Orange)	048-0115	1				
36	Cap Screw M6x14	F-SHCS-M6-14-ST-BO	1	124	Hex Bolt M10x45	F-HB-M10-45-ST-BO	1				
37	Screw M5x20	F-SPHPZ-M5-20-ST-BO	1	125	Wing Screw (Orange)	048-0124	3				
38	Tapping screw 4x16	F-TFPX-4-16-ST-BO	7	126	Fence-Silver	047-0198	1				
39	Handle Lower	047-0140	1	127	Moveable Fence-Silver	047-0199	1				
41	Cable Sheath	046-0109	1	128	Grommet	047-0200	1				
42	Cord Clip 230V/120V	048-0247	1	129	Dual Hex Key M5/M8	F-HEXKEY-M5/8-ST-BO	1				
43	Cable 230V UK 2m PVC	047-0120	1	130	Table Extension	047-0201	2				
44	Cable Clamp	046-0106	1	131	Foot	048-0105	4				
45	Connector Block	047-0148	1	132	Base-Silver	047-0202	1				
46	Trigger (Orange)	046-0103	1	138	Capacitor	047-0205	1				
47	Switch	046-0107	1	139	Release Level Shoulder Screw	048-0209	1				
48	Handle Upper	047-0150	1	140	Main Torsion Spring	047-0206	1				
49	Screw M5x35	F-SPHPZ-M5-35-ST-BO	2	141	Cable Strain	048-0172	1				
58	Blade Guard Torsion Spring	046-0141	1	200	Armature Assembly 230V	047-0050	1				
59	Inner Flange (20mm)	047-0157	1	201	Gearbox Assembly	047-0055	1				
61	Outer Flange	046-0155	1	203	Flat Pack Assembly	047-0061	2				
62	Arbour Bolt M8x16	048-0188	1	204	Blade Guard Assembly	047-0062	1				
66	Guard Coil Spring Clip	046-0152	1	205	1PC Clamp Assembly Orange	047-0065	1				
72	Shoulder Screw	047-0166	1	205	Hold Down Clamp	048-0133	1				
74	Shoulder Screw Guard Linkage	046-0146	1								
75	Pivot Block	047-0170	1								
76	Trench Stop	048-0150	1								
77	Wave Washer 7mm	F-WW-M7-ST-BO	1								
78	Cross Head Shoulder Screw M6x9	048-0149	1								
79	Cross Head Shoulder Screw M6x9	048-0151	1								
80	Pivot	047-0171	1								
81	External Circlip 16mm	F-CCEXT-16-100-ST-PO	2								
82	Lock Down Pin	048-0157	1								
83	O Ring	048-0167	2								
84	External E-clip 8mm	F-ECLIP-8-100-ST-BO	1								
85	Cap Screw M5x20	F-SHCS-M5-20-ST-BO	5								
86	Cable Tidy (Orange)	048-0154	2								
92	Rail	047-0178	2								
93	Cap Tapping Screw 5x20	F-TFSHC-5-20-ST-BO	1								
95	EU Rail Stop-Carry Handle (Orange)	047-0179	1								
96	Custom Cap Screw M6x16	F-SHCS-M6-16-ST-BO	5								



Service Parts List

V: 047-0001.01

185mm Multi-Material Cutting Sliding Mitre Saw

230V  
UK